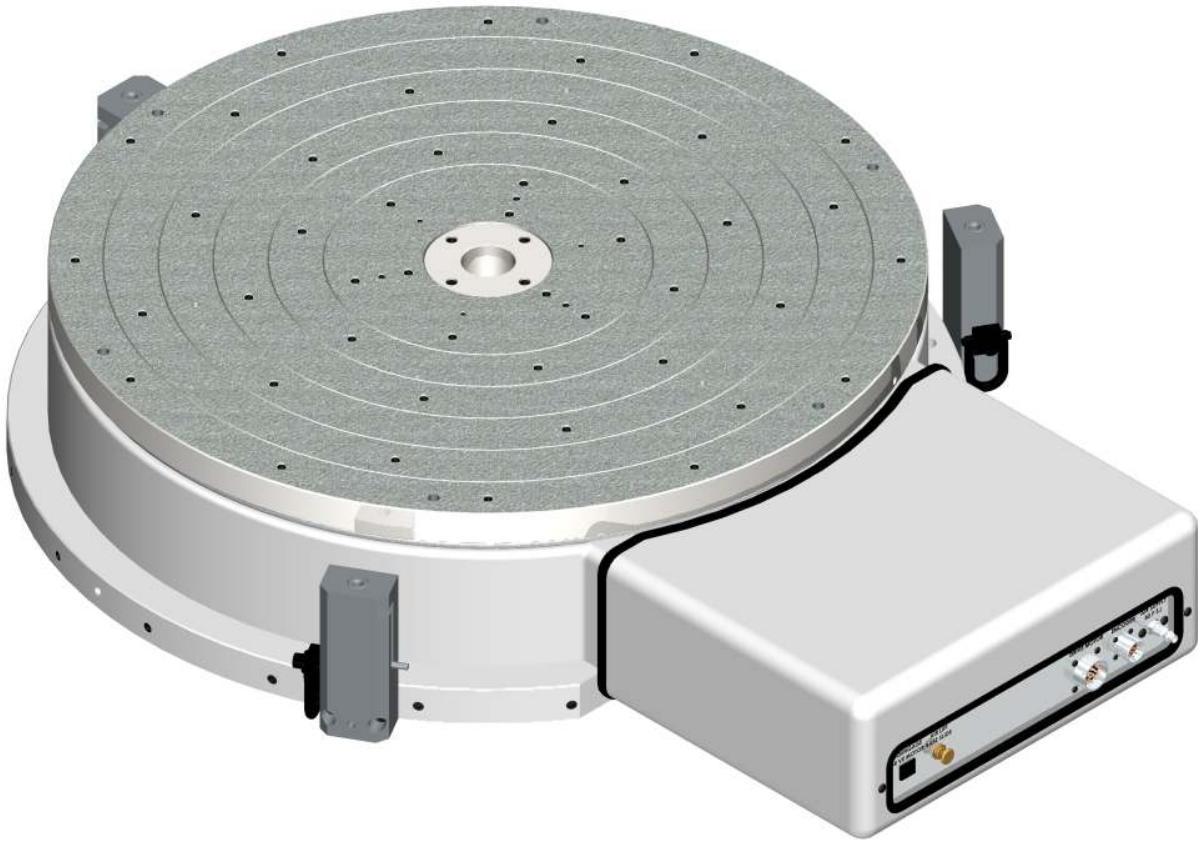


Air Float Capstan Servo (AFCS) Rotary Tables

RT32-AFCS



RT32 Face Plate Geometry Specifications

Description	Accuracy Grades		
	30	50	100
Face Plate Runout at 14.5 in. (368.3 mm) Radius	0.000100 (.00254 mm)	0.000165 (.0042 mm)	0.000330 (.0084 mm)
Base Runout at 16.5 in. (419.1 mm) Radius	0.000100 (.00254 mm)	0.000165 (.0042 mm)	0.000330 (.0084 mm)
Face Plate Dish (Flatness)	0.000100 (.00254 mm)	0.000165 (.0042 mm)	0.000330 (.0084 mm)
Center Pilot Runout	0.000050 (.00127 mm)	0.000100 (.0025 mm)	0.000200 (.0051 mm)

Note- Geometry Specifications apply when the Air Float Rotary Table is locked. (Air Float off)

Load Capacity Radial	Load Capacity Thrust	Operating Air Pressure	Air Flow	RT Weight
800 lbs. (364 kg)	12,850 lbs. (5,841 kg)	80 PSI (5.5 Bar)	42 CFH (1.19 m ³ /h)	1,160 lbs. (526 kg)

RT32 Servo Drive Options

Description	Drive Options	
	465	620
Drive Motor	PMI #U16M4T	PMI #U16M4T
Tachometer	Yes	Yes
Drive Ratio	465:1	620:1
Maximum RPM	6.4	4.8

Performance Grade (Reflected Load Inertia Ratio)							
Drive Ratio	0.5	0.75	1	1.25	1.5	1.75	2
	Inertia Capacity (lb-ft ²)						
465	182	1,196	2,211	3,225	4,239	5,253	6,268
620	713	2,515	4,318	6,121	7,924	9,727	11,530
	Inertia Capacity (kg-m ²)						
465	8	50	93	136	179	221	264
620	30	106	182	258	334	410	486